

York County, SC: A custom AVL solution turned Geocortex[®] product

York County, South Carolina is situated along the North Carolina border, and is home to approximately 227,000 people, residing within an area of 685 square miles. The county contains nine municipalities and administers services to residential communities, agricultural areas, and diversified business and industry. York County's GIS department currently supports over 1,000 county employees including road maintenance, animal control, and waste management fleets.

The York County Public Works Department determined that asset tracking could improve the management of their mobile assets. Initially, some felt that a supervisor's ability to monitor an employee's location was intrusive. However, after occurrences where employees in need of help were unable to report their locations, the concept that an asset tracking system could increase employee safety allayed those concerns.

The Challenges

In September 2008, the York County Public Works Department began tracking its fleets. Mobile assets were equipped with radios in a Motorola Astro 25 radio system network. To fully leverage the asset tracking capabilities of the radio network, York County required an application that could interface with the data collected from their vehicles. However, the small GIS department was faced with limited time to invest in producing a custom web solution.

The Custom Solution

York County saw that a partnership with Latitude Geographics could complement their existing ESRI investment and help solve many of their web GIS needs. From the administration and technology side, it meant keeping it simple: learning one set of technology from one vendor. "Geocortex Essentials will be the framework that we will use to build all our ArcGIS



Case Study Summary

Client:

York County

Location:

South Carolina

The Challenges:

- » Improving employee safety
- » Integrating with existing technologies, specifically Motorola radio network and ArcGIS Server

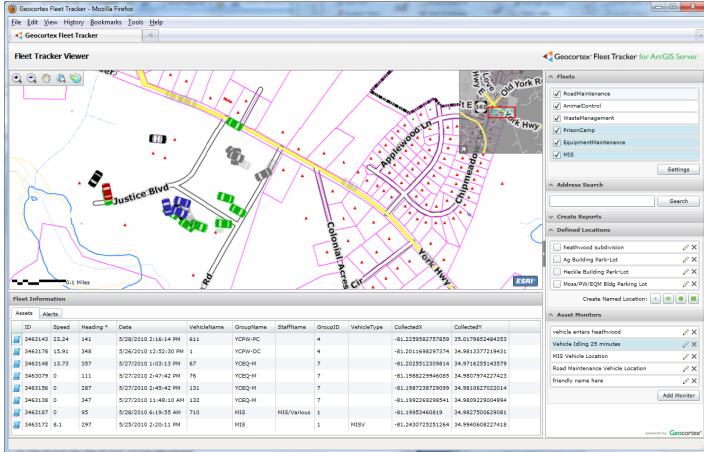
The Solution:

- » Creation of a custom asset tracker
- » Release of Geocortex Fleet Tracker

The Result:

- » Deployment and use across multiple Public Works fleets
- » Possible extension of deployment to other departments

Server applications from in the future” says Bryan Townsend, GIS Administrator. “It will provide a common interface for the user and one development and maintenance environment for easier administration.”



York County Uses Fleet Tracker to store and track the status and location of mobile assets

The initial implementation was custom built to integrate with the AVL component of the existing radio system network. This solution allowed the capture and display of current vehicle information such as ID, location, and speed. Historical data was archived for later use. The early fleet tracker stimulated valuable conversations about future uses and features. Could the average time for certain tasks be extracted? Could an asset's idle time be identified?

The Geocortex® Fleet Tracker Solution

York County's most recent implementation came in February 2010 with the release of Geocortex Fleet Tracker for Geocortex Essentials using ESRI's Silverlight API. This implementation introduced a user interface that was simpler than the custom solution, and was designed specifically with asset management in mind. This product features customizable searches, reports, and alerts, as well as an intuitive graphical display. The user can easily see the recent and current locations of vehicles, and display tabular historical reports.

The Result

Currently, York County uses Geocortex Fleet Tracker for duties that range from management tasks to live dispatch by animal control. Tim Walling, Assistant Supervisor of Road Maintenance, feels that Geocortex Fleet Tracker “is a vital tool for us to use. Not only for safety, but also for the production and collection of data for the future allocation of our resources.”

The benefits to employee safety and asset management that Geocortex Fleet Tracker has brought to the Public Works department are being recognized by other departments in York County. Consequently, discussions are in progress to expand deployment to include the Public Safety department's fleet.

Continued development includes more than just tracking additional units and fleets. There are also plans to integrate the Public Works deployment of Geocortex Fleet Tracker with the county Computerized Maintenance Management System and to analyze the data collected for continued resource allocation management.

More Information

You can see a Client Spotlight of York County, South Carolina from the Spring/Summer 2009 (Vol. 5, No. 2) issue of the Geocortex Newsletter at: http://www.geocortex.com/FeaturedApplications/York_County.html

For more information, please contact Jade Northrup, Project Manager, Latitude Geographics (jnorthrup@latitudegeo.com) or Bryan Townsend, GIS Administrator, York County Government (bryan.townsend@yorkcountygov.com).

